



**Phyllis Rosser**

*Circle of Binding Energy*

2018

wood

32 x 24 x 10

\$800



**Carol Keiser**

*Cat on Kitchen Table*

2023-24

acrylic on canvas

50 x 40 in

\$4500

**Clare Adams**



*Nikole Hannah Jones*

2022

stained and reverse

painted glass

14 x 11 in

\$2200



Off Center Azure 27" x 18" x 0.5" Wood

**Phyllis Rosser**

*Off Center Azure*

2018

wood

27 x 18 x 2.5

\$250



**Carol Keiser**

*Fall Reflections,  
Kennebunkport, ME.*

2023

acrylic on canvas

28 x 22 in

\$1950



*Liz Cheney*

2022

stained and reverse

painted glass

11 x 11 in

\$2000



**Phyllis Rosser**

*Memory Leaf*

2019

wood

24 x 17 x 6

\$300



**Carol Keiser**

*View from My Kitchen  
Window*

2023

acrylic on canvas

28 x 22 in

\$1950



*Maya Anjalou*

2022

stained and reverse

painted glass

10 x 13 in

\$2000



*Frida Kahlo*

2022

stained and reverse  
painted glass

15 x 15 in

\$2000



*RGB*

2022

stained and reverse  
painted glass

15 x 15 in

\$2000



**Kathy Lavine**

*Boundaries*

2024

48 x 36 in  
oil on canvas

\$5250



**Len Emery**

*Driftwood I*

2024

single edition pigment print  
on handmade 23gsm  
mulberry paper silicone  
mounted on archival foam  
board and double matted  
in artist handmade walnut  
frame with maple or ash  
splines under museum  
glass

19 x 16 in

\$600



**Len Emery**

*Alley Bay, Beals Island and  
the Lifting Fog*

2024

13 x 24 in

single edition pigment print  
on handmade 23gsm  
mulberry paper silicone  
mounted on archival foam  
board and double matted  
in artist handmade walnut  
frame with maple or ash  
splines under museum  
glass

\$600



**Len Emery**

*Fishing in the Fog*

2024

16 x 22 in

single edition pigment print  
on handmade 23gsm  
mulberry paper silicone  
mounted on archival foam  
board and double matted  
in artist handmade walnut  
frame with maple or ash  
splines under museum  
glass

\$600



**Len Emery**

*Morning Light*

2024

11 x 20 in

single edition pigment print  
on handmade 23gsm  
mulberry paper silicone  
mounted on archival foam  
board and double matted  
in artist handmade walnut  
frame with maple or ash  
splines under museum  
glass

\$600



## Len Emery

*The Walk to Work*

2024

14 x 20 in

single edition pigment print  
on handmade 23gsm

mulberry paper silicone  
mounted on archival foam  
board and double matted  
in artist handmade walnut  
frame with maple or ash  
splines under museum  
glass

\$600



## Corinne Greenhalgh

*"Things to do TODAY!"*

2023

42 x 96 in

embroidered text on found  
linen

\$10,000



*Weird Winter III*

2024

oil on canvas

18 x 24 in

\$1100



## Len Emery

*Anchorage 1*

2024

15 x 21 in

single edition pigment print  
on handmade 23gsm

mulberry paper silicone  
mounted on archival foam  
board and double matted  
in artist handmade walnut  
frame with maple or ash  
splines under museum  
glass

\$600



*Weird Winter I*

2024

oil on canvas

16 x 20 in

\$1100



## Mindy Fisher

*Southwest Sea*

2023

acryla-gouache on canvas

58 x 58 in

\$10,000



*Weird Winter II*

2024

oil on canvas

20 x 16 in

\$1100



## Jean Krasno

*Billie Holiday: Some Other  
Spring*

mixed media collage

28 x 24 in

\$3000



## Jean Krasno

*A Foggy Day in London Town*

mixed media collage

30 x 29 in

\$5000



## Jean Krasno

*Man With Heavy Sack*

bronze, wood

14 x 10 x 7 in

\$2000



*Twirl*

2024

archival pigment prints on  
Hahnemuhle "William  
Turner" 100% cotton paper

16 x 20 in

\$600



## Jean Krasno

*Isn't This a Lovely Day*

mixed media collage

28 x 24 in

\$3000



*Calla Lily*

2024

archival pigment prints on  
Hahnemuhle "William  
Turner" 100% cotton paper

16 x 20 in

\$600

## Medora Hebert



*Yellow Rose*

2024

archival pigment prints on  
Hahnemuhle "William  
Turner" 100% cotton paper

12 x 15 in

\$300

## Jean Krasno

*Proud Woman*

bronze, stone

15 x 7.5 x 8 in

\$2000



*White Poppy*

2024

archival pigment prints on  
Hahnemuhle "William  
Turner" 100% cotton paper

16 x 20 in

\$600



*Weird Botany*

2024

archival pigment prints on  
Hahnemuhle "William  
Turner" 100% cotton paper

16 x 20 in

\$600



*Silk Road*

2024

archival pigment prints on Hahnemuhle "William Turner" 100% cotton paper  
12 x 15 in  
\$300

**MC Noyes**

*Water Way Book 1 (20-28)*

2024

powdered pigments hand mixed with animal glue on handmade single weight single weight raw Mulberry paper, mounted on Mohab archival paper and stab bound as a handmade eighteen page single edition book of original artwork  
11 x 17 in  
\$4,200

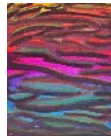


**MC Noyes**

*Water Way 29*

2023

hand ground ink on handmade single weight raw Xuan paper mounted on archival foam board  
24 x 18 in  
\$1000



**MC Noyes**

*Water Way 108*

2024

hand ground ink on handmade single weight raw Mulberry paper mounted on archival foam board  
24 x 18 in  
\$1000

**MC Noyes**



*Water Way 111*

2023

hand ground inks on handmade single weight sized and gold dyed Xuan

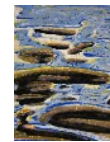
paper mounted on archival foam board  
7 x 5 in  
\$90



*Water Way 115*

2023

hand ground inks on handmade single weight sized and gold dyed Xuan paper mounted on archival foam board  
7 x 5 in  
\$90



*Water Way 116*

2023

hand ground natural mineral inks on handmade single weight sized and gold dyed Xuan paper mounted on archival foam board  
10 x 8 in  
\$200



*Water Way 117*

2023

hand ground natural mineral inks on handmade single weight sized and gold dyed Xuan paper mounted on archival foam board  
10 x 8 in  
\$200



*Water Way 119*

2023

hand ground natural mineral inks on handmade single weight sized and gold dyed Xuan paper mounted on archival foam board  
10 x 8 in  
\$200



*Water Way 112*

2023

hand ground inks on handmade single weight raw Mulberry paper

mounted on archival foam board  
10 x 8 in  
\$200



*Water Way 113*

2023

hand ground inks on handmade single weight raw Mulberry paper mounted on archival foam board  
10 x 8 in  
\$200



*Water Way 101*

2023

hand ground natural mineral and botanical inks on handmade single weight raw Xuan paper mounted on archival foam board  
11 x 14 in  
\$380



*Water Way 102*

2023

hand ground natural mineral and botanical inks on handmade single weight raw Xuan paper mounted on archival foam board  
11 x 14 in  
\$380



*Water Way 106*

2023

hand ground natural mineral and botanical inks on handmade single weight raw Xuan paper mounted on archival foam board  
10 x 8 in  
\$200

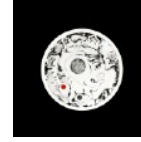
# Kathleen Zimmerman



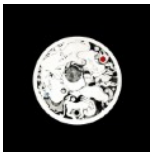
*Zoo series - Ocean*  
2024  
intaglio, charcoal and acrylic on paper  
8 in (diameter), 14 x 14 in (framed)



*Zoo series - Savanna*  
2024  
intaglio, charcoal and acrylic on paper  
8 in (diameter), 14 x 14 in (framed)



*Zoo series - Farm*  
2024  
intaglio, charcoal and acrylic on paper  
8 in (diameter), 14 x 14 in (framed)

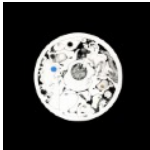


*Zoo series - Jungle*  
2024  
intaglio, charcoal and acrylic on paper  
8 in (diameter), 14 x 14 in (framed)



*Zoo series - Tundra*  
2024  
intaglio, charcoal and acrylic on paper  
8 in (diameter), 14 x 14 in (framed)

\$3,000 set of seven



*Zoo series - Forest*  
2024  
intaglio, charcoal and acrylic on paper  
8 in (diameter), 14 x 14 in (framed)



*Zoo series - Desert*  
2024  
intaglio, charcoal and acrylic on paper  
8 in (diameter), 14 x 14 in (framed)

# Nicholas Kekic



*Red and Yellow Filigrana Tollo*  
2024  
blown glass  
\$500



*Red and Yellow Filigrana Sphere*  
2024  
blown glass  
\$500

*Red and Yellow Filigrana  
Bottle*

2024

blown glass

\$500



*Red and Yellow Filigrana  
Inkwell*

2024

blown glass

\$600



*Red and Yellow Filigrana  
Footed Bowl*

2024

blown glass

\$1450



*Incalmo Amphora with  
Cane Section*

2024

blown glass

\$1650



*Incalmo Bowl with Cane  
Section*

2024

blown glass

\$1450



*Incalmo Tall Vase with Cane  
Section*

2024

blown glass

\$1450

*Penelope Arms*



*Misty Morning*

2021

oil on panel

11 x 14 in

\$800



*Early Morning*

2022

oil on panel

11 x 14 in

\$700



*Brilliant Fall*

2023

oil on panel

11 x 14 in

\$900



*Penelope Arms*

*Birches*

2023

oil on canvas

18 x 24 in

\$1500

*Penelope Arms*



*Estuary*

2023

oil on panel

4.75 x 6.75 in

\$200





*October Magic*  
2023  
oil on panel  
6.75 x 6.75 in  
\$200



*Snowy Meadow*  
2023  
oil on panel  
4.75 x 6.75 in  
\$200



*Old Birch*  
2023  
oil on panel  
5.5 x 5.5 in  
\$200



*Apple Blossoms*  
2023  
oil on panel  
6.75 x 6.75 in  
\$200



*Autumn Pond*  
2023  
oil on panel  
4.75 x 6.75 in  
\$200



*Filtered Light*  
2023  
oil on panel  
6.75 x 6.75 in  
\$200



*Jeanette Staley*  
*(R)Evolution*  
2024  
collage, acrylic, ink and  
chalk on cradled board  
30 x 24 in  
\$4000

## Jeanette Staley

*Pig-Tailed Baboon,*  
*Endangered*  
2024  
mixed media collage on  
board  
30 x 24 in  
\$4000



## Jeanette Staley

*Scarlet Ibis*  
2024  
mixed media collage on  
board  
24 x 16 in  
\$2200

# Jeanette Staley



*The Blow Fly*

2024  
collage, acrylic and lino cut  
print on cradled board  
6 x 6 in  
\$200



*American Burying Beetles*

2024  
collage, acrylic, ink and  
chalk on cradled board  
6 x 8 in  
\$450



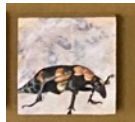
*American Burying Beetle 1*

2024  
mixed media collage on  
board  
4 x 4 in  
\$300



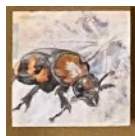
*American Burying Beetle 2*

2024  
collage, acrylic, ink and  
chalk on cradled board  
4 x 4 in  
\$300



*American Burying Beetle 3*

2024  
collage, acrylic, ink and  
chalk on cradled board  
4 x 4 in  
\$300



*American Burying Beetle 4*

2024  
collage, acrylic, ink and  
chalk on cradled board  
4 x 4 in  
\$300



*Honey B*

2024  
collage, acrylic, ink and  
chalk on cradled board  
6 x 6 in  
\$300

# Chris Sherwin



*Purple Flowers  
Paperweight*

2023  
blown sculpted and torch-  
worked glass  
2.5 in  
\$125



*Cobalt Flowers with White  
Flower Paperweight*

2023  
blown sculpted and torch-  
worked glass  
2.42 in  
\$90



*Snake and Purple Flowers  
Paperweight*  
2023  
blown sculpted and torch-  
worked glass  
1.74 in  
\$150



*Three White Flowers  
Paperweight*  
2023  
blown sculpted and torch-  
worked glass  
1.42 in  
\$45



*Many green four leaf  
clovers*  
2023  
blown sculpted and torch-  
worked glass  
1.92 in  
\$60



*Blue Flowers Tree*  
2023  
blown sculpted and torch-  
worked glass  
2 in  
\$75

## Chris Sherwin



*Jellyfish, Blue, sm*  
2024  
blown glass  
\$300



*Jellyfish, Blue, lg*  
2024  
blown glass  
\$450



*Jellyfish, pink*  
2024  
blown glass  
\$300

## Chris Sherwin



*Iris vase in clear  
encasement*  
2024  
torch work, blown glass  
\$375



*Iris paperweight*  
2024  
torch work, blown glass  
\$225

## Chris Sherwin



*Iris vase in clear  
encasement with foot*  
2024  
torch work, blown glass  
\$350



*Iris paperweight, tall*  
2024  
torch work, blown glass  
\$300

## Chris Sherwin



*Iris and cape cod tulip  
paperweight, 1 (red accent  
on yellow flower petals)*  
2024  
torch work, blown glass  
\$285

*Iris and crocus  
paperweight, 2 (yellow  
petal crocus)*  
2024  
torch work, blown glass  
\$275

## Chris Sherwin



*Flower bouquet  
paperweight*  
2024  
lamp work, blown glass  
\$300



*Yellow Rose paperweight*  
2024  
lamp work, blown glass  
\$300

## Carol Keiser

*Umbrellas on Patio, Cinque  
Terre*  
2022  
Acrylic on linen  
14 x 11 in  
\$850

*Farmhouse, Cinque Terre*  
2022  
Acrylic on linen  
14 x 11 in  
\$850

## Jeanne McMahan

*Fog on the River*  
2020  
Oil on canvas  
8 x 10 in  
\$200

*Not Yet Spring*  
2020  
Oil on canvas  
8 x 10 in  
\$200

*Hedgerow*  
2020  
Oil on canvas  
10 x 8 in  
\$200